

Ashcroft

Homes Designed & Built by R.L. Beyer Custom Homes
www.ashcroftviews.com | info@beyerhomes.com



HOME DESIGN 5

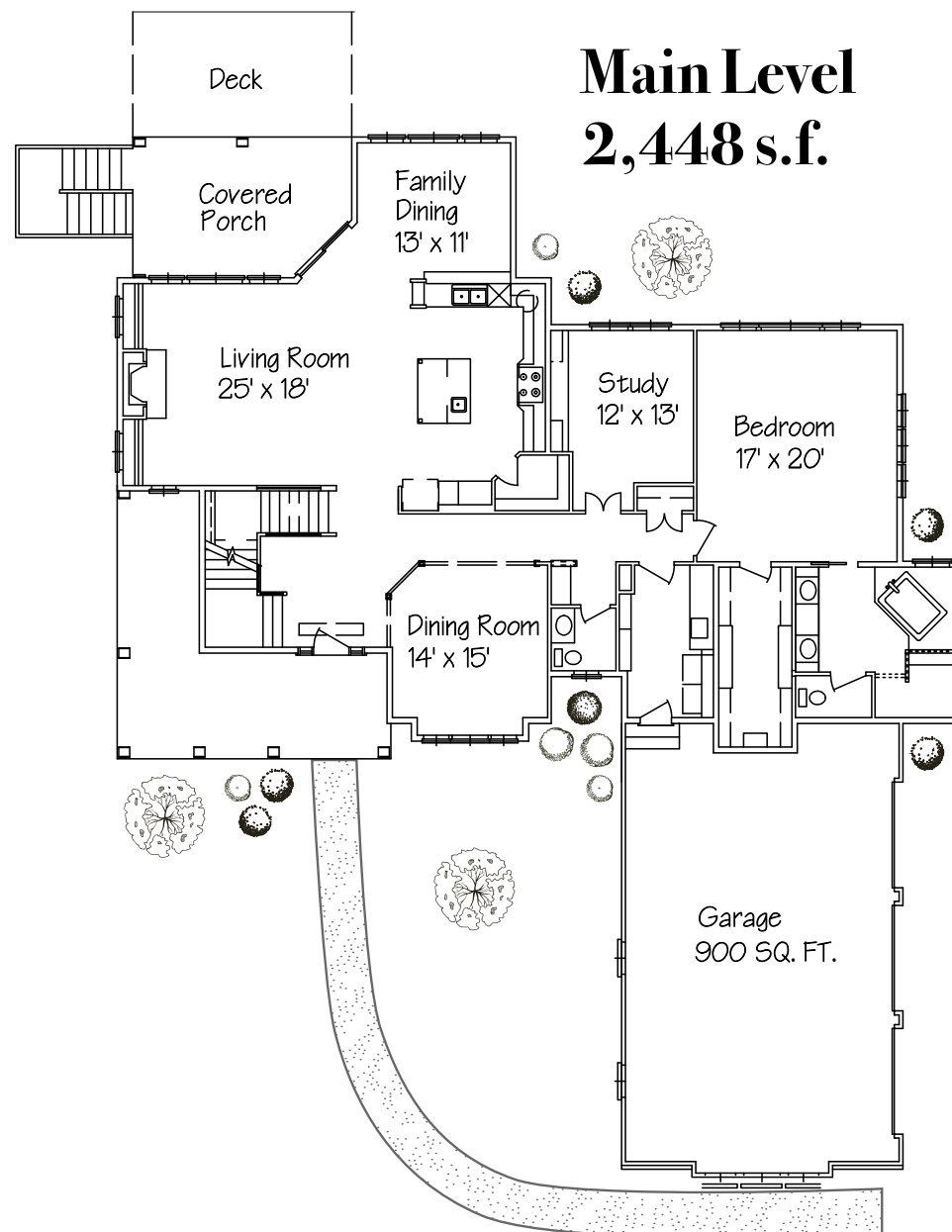
CRISP WHITE PAINTED BRICK EXTERIOR BLENDED WITH HANDSOME STAINED WOOD TRIM, ARTFULLY SUGGESTING A EUROPEAN FARMHOUSE

OPEN FLOOR PLAN WITH FORMAL DINING ROOM, CRAFTED TURNED STAIRCASE, HANDSOME STUDY, GRAND KITCHEN, AND ELEGANT FIRST FLOOR MASTER SUITE

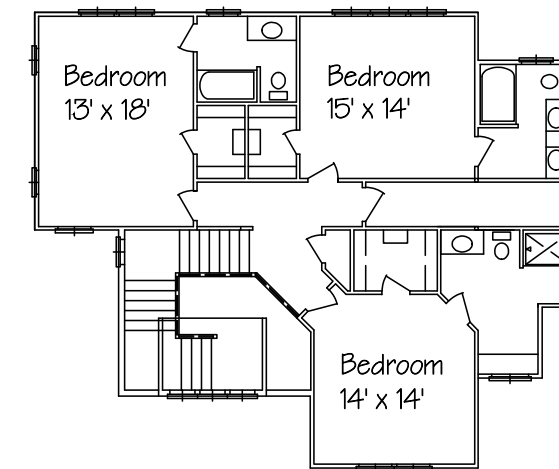
MINUTES TO DOWNTOWN CHARLOTTESVILLE AND RENOWNED HEALTH FACILITIES OF MARTHA JEFFERSON HOSPITAL AND UVA HEALTH CAMPUS

MAJESTIC MOUNTAIN VIEWS AND 2+ ACRE HOME SITE, ENSURING PRIVACY WITH THE ADJOINING ASHCROFT COMMON AREA

Marketed by Suzie Pace
Pace Real Estate Associates LLC
suzie@pace-homes.com | (434) 981-3385

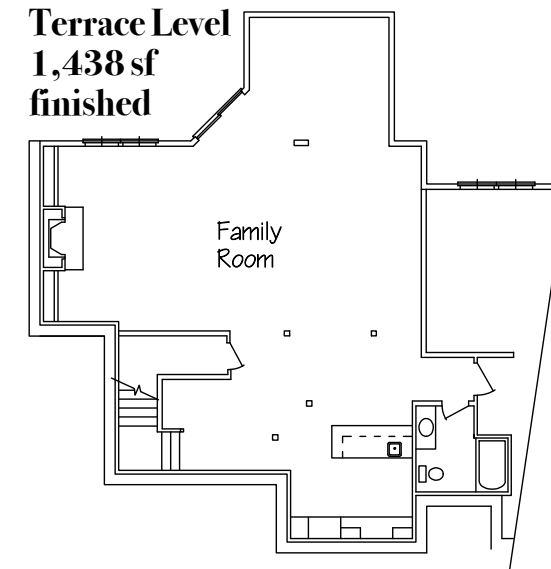


Family Level - 1,218 s.f.



Terrace Level

1,438 sf finished



For representative purposes only. Actual house and specifications may vary. Photos may be representative of the area and not specific property.