

# Ashcroft

Homes Designed & Built by R.L. Beyer Custom Homes  
www.BeyerHomes.com | info@beyerhomes.com



## HOME DESIGN 7

GREAT ROOM DESIGN OFFERS A RELAXED ELEGANCE WITH CUSTOM TRIM WORK, BEAMED CEILING, HANDSOME STONE FIREPLACE AND DESIGNER KITCHEN

SEPARATE FORMAL DINING ROOM FLANKED BY CUSTOM CRAFTED PILLARS AND A FINELY DETAILED FIRST FLOOR STUDY

ELEGANT FIRST FLOOR MASTER SUITE WITH SPACIOUS MASTER BATH BOASTING BEAUTIFUL NATURAL MATERIALS

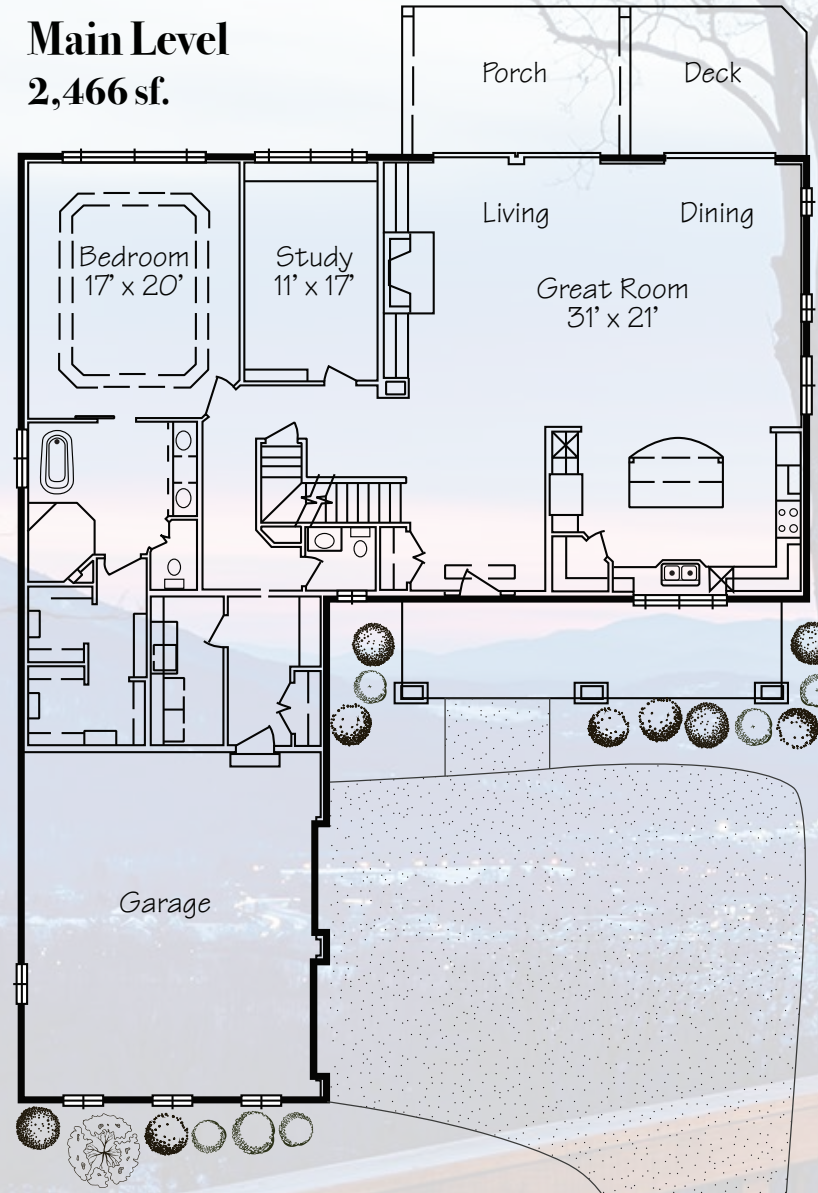
TERRACE LEVEL OFFERING FLEXIBILITY TO CUSTOMIZE TO MANY LIFESTYLES & ENHANCED BY A THOUGHTFULLY DESIGNED BAR AREA.

OUTDOOR SPACES ABOUND WITH COVERED PORCHES, DECK, AND PATIO TO ENJOY THE SURROUNDING MOUNTAIN VIEWS.

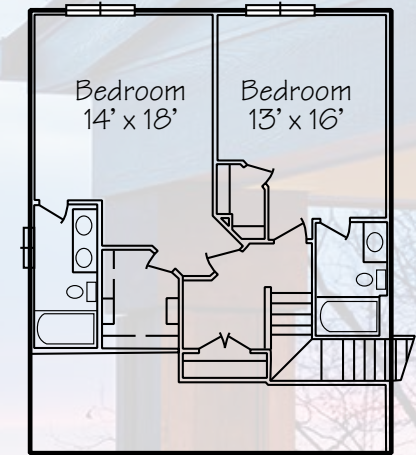
Marketed by Suzie Pace  
Pace Real Estate Associates LLC  
suzie@pace-homes.com | (434) 981-3385



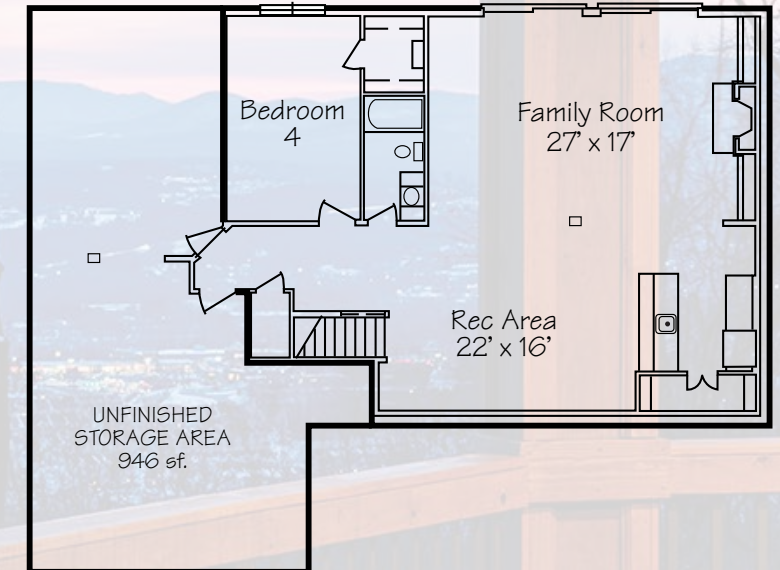
### Main Level 2,466 sf.



### Second Level 803 sf.



### Terrace Level 1,520 sf. finished



For representative purposes only. Actual house and specifications may vary. Photos may be representative of the area and not specific property.